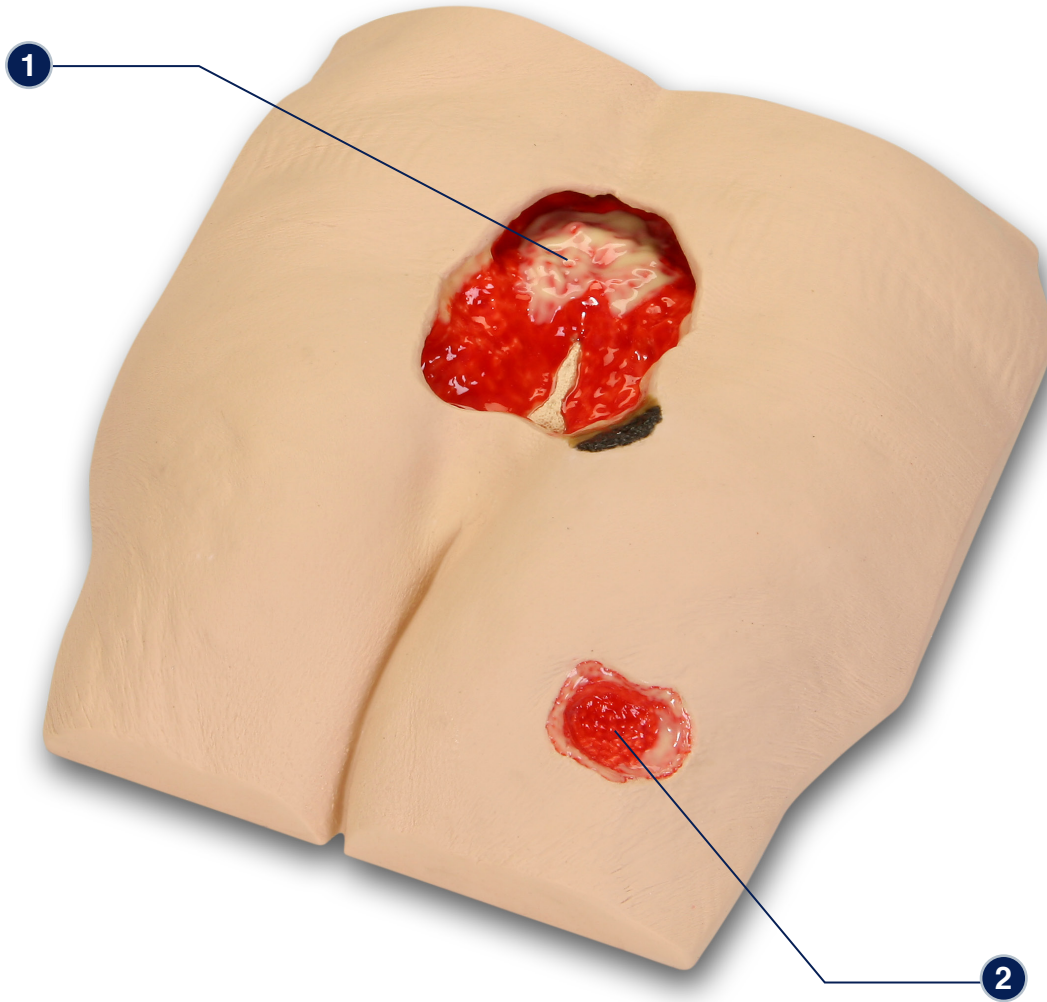


Stan Stage 4 Pressure Injury Model™ – 0970



The following pressure injuries* are presented on *Stan Stage 4 Pressure Injury Model™*

- 1** Stage 4 Pressure Injury with eschar, subcutaneous fat, undermining, tunneling, slough, exposed bone (with osteomyelitis) and rolled wound margins
- 2** Early* Stage 3 Pressure Injury with subcutaneous fat and pale granulation tissue (Early* as there is no wound contraction present)

** We have included the most likely etiology-based descriptions, but realize many wounds can appear in the same location, having different etiologies. The definitive diagnosis is up to the clinician and interprofessional wound care team.*

Care Instructions: To clean your model **VATA** recommends soap and warm water. Some customers have found applying a barrier/skin prep can give them the adhesion they are looking for.

