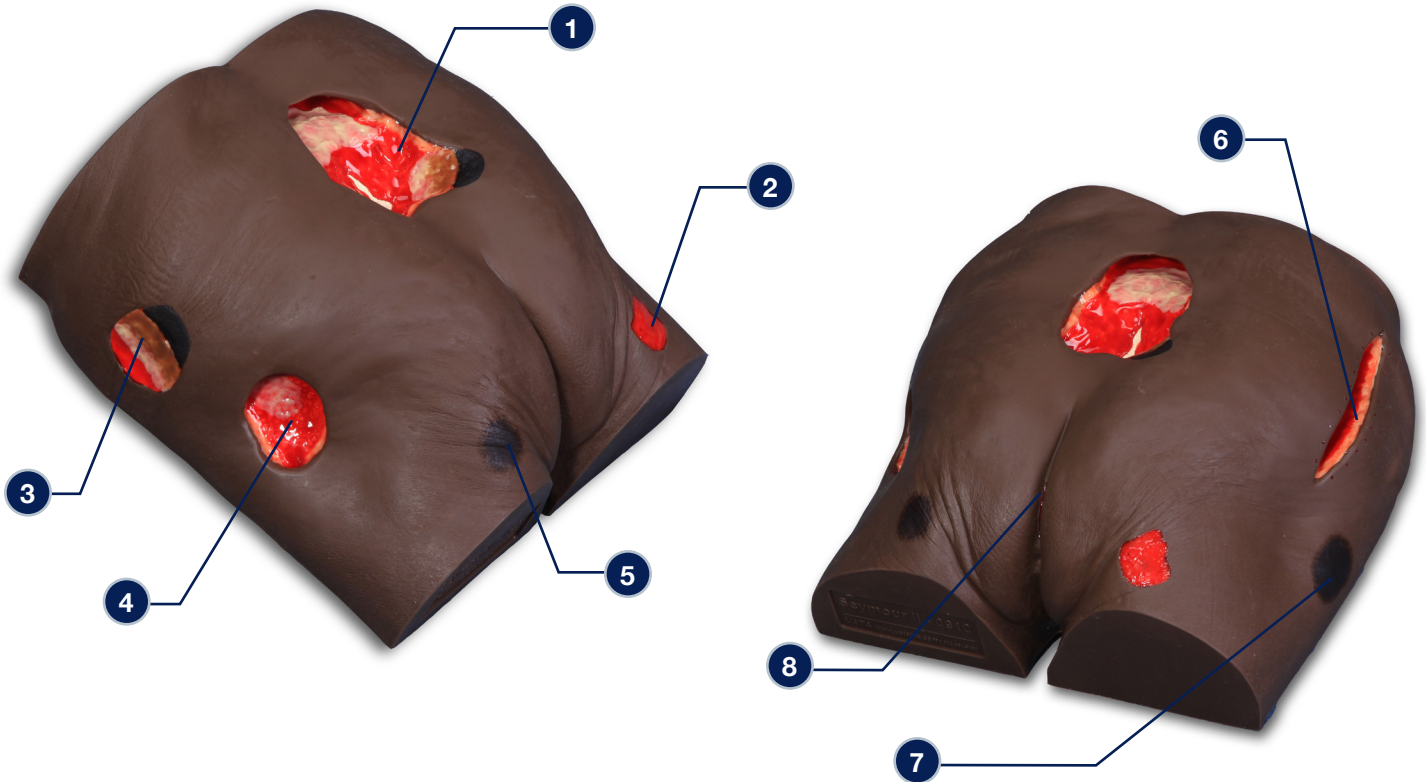


## Seymour II™ Wound Care Model Darkly Pigmented – 0920



### The following wounds\* and pressure injuries\* are presented on Seymour II™ Wound Care Model

- 1 Stage 4 Pressure Injury with eschar, subcutaneous fat, undermining, tunneling, slough, exposed bone (with osteomyelitis) and rolled wound edges
- 2 Stage 2 Ischial Pressure Injury
- 3 Unstageable Pressure Injury with Slough and Eschar
- 4 Stage 3 Pressure Injury with subcutaneous fat, slough, granulation tissue, undermining and tunneling
- 5 Stage 1 Ischial Pressure Injury
- 6 5 1/2" long dehisced surgical wound with subcutaneous fat and original suture marks visible
- 7 DTPI (Deep Tissue Pressure Injury)
- 8 Possible rectal fissure, either a tear from splitting the buttocks (usually happens when patients are pulled onto a cart) or from erosion from stool or urine trapped in the skin fold

\* We have included the most likely etiology-based descriptions, but realize many wounds can appear in the same location, having different etiologies. The definitive diagnosis is up to the clinician and interprofessional wound care team.

**Care Instructions:** To clean your model **VATA** recommends soap and warm water. Some customers have found applying a barrier/skin prep can give them the adhesion they are looking for.

